

SYDNEY TRAMWAY MUSEUM

CHANGE MANAGEMENT PROCEDURE

~~MARCH 2016~~ MAY 2020

Document Control Record

1. Document Details:

Name: Change Management Procedure

Number STM6012

Version Number: 2.56

Document Status: Working Draft

Approved for Issue

Archived

Next Scheduled Review Date:

2. Version History:

Version Number	Date	Reason/Comments
1.0	31/10/2006	Initial issue
1.1	31/01/2008	Review of the Change process
1.2	27/10/2008	Added RSMT duties
2.0	24/12/2008	Major revised the procedure
2.1	25/06/2009	Modifications for Rail Safety Act 2008
2.2	18/07/2010	Changed ITSRR to ITSR
2.3	05/06/2011	Amend the frequency of creating CD copies of files
2.4	05/02/2015	Change ITSR to ONRSR and new regulator forms
2.5	31/03/2016	Amended Distribution List format and amend "Updating SMS Documents".
2.6	8/05/2020	Made minor changes to correct errors.

Approved by **Signature & Date**

3. Distribution List

Position	Date	Location of Documents
Rail Safety Manager		Original held on GOOGLE secure Website
STM WEB SITE		Updated regularly and put onto the STM Web site.
STM Office		STM Office Computer
STM Office		STM Office cupboard

SYDNEY TRAMWAY MUSEUM

1. Purpose

To provide a procedure to review a proposed change in rolling stock, infrastructure, operations or other areas of the Sydney Tramway Museum (STM) rail safety activities. In the process of reviewing the change the risks are identified and assessed with the details recorded in the STM Safety Management System.

2. Scope

This process is to be applied to all proposed changes to:

a) Rolling stock including:

- Commissioning of new rolling stock (i.e. new to the STM);
- Commissioning of restored rolling stock;
- Changes to rolling stock standards; and
- Commissioning of major overhauled rolling stock, where changes have been made to the structure or operating performances, or from an initial design;

b) Infrastructure including:

- Commissioning of new track work or infrastructure;
- Major alterations to existing track work;
- Major alterations to existing infrastructure;
- Changes to infrastructure standards;
- Signalling, operational systems and telecommunications infrastructure; and
- Changes to the infrastructure maintenance activities.

c) Operations including:

- The driving or operation of trams;
- Controlling the movement of trams;
- Large events; and
- Safe working systems and procedures.

d) Other Areas where the proposed changes may affect the safety of STM activities or impact on the safety of other parties including:

- Organisational Structure including:
 - Creation or deletion of positions; and
 - Changes to organisation hierarchy.
- Changes to other standards;
- Job roles and responsibilities
- Equipment and non-rail infrastructure including roadways;
- Interface with other engineering and operating systems;
- Personal workplace safety; and
- Temporary or unplanned changes.

3. Responsibilities

The Board will determine who will be responsible for safety validation sign off.

The RSMT will review all of the risks associated with the types of changes specified in the scope above and perform the risk assessments. This review, which will be managed by the RSM, could be performed by an onsite meeting or by e-mail amongst the RSMT members.

SYDNEY TRAMWAY MUSEUM

All STM members are encouraged to suggest changes and make continuous improvement suggestions to the Rail Safety Manager.

4. References

Rail Safety National Law

Australian Standard AS 4360 Risk Management

STM6003 – Risk Register

STM6006 – Safety Record Retention Schedule

STM6013 - Change Request Form

STM6014 – Change Register

STM6042 – Rail Safety Management Plan

Notification_of_Change To Railway Operations (*an ONRSR form*)

Notification of Change Guidelines (an ONRSR document)

5. Definitions

ONRSR	Office of the National Rail Safety Regulator
RSM	Rail Safety Manager
RSMT	Rail Safety Management Team
STM	Sydney Tramway Museum the trading name of South Pacific Electric Railway Co-Operative Society.
The Board	refers to the South Pacific Electric Railway Co-Operative Society Limited Board of Directors

6. Actions

6.1 General

The Board will collectively and as individuals ensure that no changes to STM infrastructure, rolling stock, procedures, processes and systems, organisational structure or job roles and responsibilities occur unless the processes described in this procedure are followed.

All changes need to be recorded on the Change Request Form (STM6013). All changes need to be assessed as to the impact (if any) on the level of risk to the Museum, and to persons in contact with the Museum.

The Notification of Change Guidelines includes as a prescribed condition of accreditation the mandatory notification by accredited rail transport operators of certain decisions, events or proposed changes relating to their railway operations.

Section 3 defines the proposed decisions, events or changes that must be notified to ONRSR within the timeframe specified.

6.2 Types Of Change

The various types of change are:

- Change which is planned, but must take into account any unintended consequences in related areas;
- Unavoidable, unplanned or unintended changes, including ‘creeping’ or ‘incremental’ change where the impact at any time may seem minor, but over a period can significantly increase risk;
- Temporary changes; and
- Emergency or abnormal changes which may be required within a short timeframe and therefore may require different treatment.

SYDNEY TRAMWAY MUSEUM

6.3 Requirements

Any proposed change which could affect safe operations shall require the following:

- A risk assessment, conducted in accordance with the STM Risk Management Process;
- The identification of suitable controls;
- Consultation with affected internal and external stakeholders, including relevant rail safety workers;
- A check that the proposed change conforms with relevant legislation;
- Documentation of the change and a record of the change will be placed in the Change Register (STM6014); and

The preparation and lodgement with the rail safety regulator of an application for variation of accreditation if a material change is to be made.

6.4 Sign Off

- Safety Validation shall only be undertaken by people who have the skills, knowledge and experience in the areas affected by a proposed change.
- The Rail Safety Management Team will determine who will be responsible for the Safety Validation sign off. In some cases more than one person may need to sign off the safety validation.
- No change shall be introduced before the Safety Validation is complete and approved by the Rail Safety Management Team.

6.5 Completion of Change Request Form

The Change Request Form (STM6013) must be raised for all changes at the STM. The person requesting the change must also sign the request.

The first page of the form is to be completed by the person requesting the change. The approvals for the change will only be those managers whose area is affected by the change. However the Rail Safety Manager must also sign off all changes.

The second page of the form must be completed by the Rail Safety Manager in consultation with the the person requesting the change.

The third page of the form needs to be completed by the Rail Safety Manager.

The fourth page of the form must be completed by the Rail Safety Manager in consultation with the Rail Safety Management Team. Any new identified risks must be added to the Risk Register (STM6003).

The Rail Safety Manager includes all changes, and their current status, in his monthly report to the Board.

6.6 Change Register

The RSM will record all of the Change Requests in the Change Register (STM6014). The register will show the status of all of the changes in progress.

A copy of the Change Register will be forwarded to the Board each month for review. The Rail Safety Manager includes all changes, and their current status, in his monthly report to the Board.

6.7 Filing and Archiving of Change Requests

All Change Requests will be filed in a folder in the Main Office and retained as per the Safety Record Retention Schedule (STM6006).

The change Register (STM6014) will also be filed in the same folder.

6.8 Changes to Procedures, Forms, etc

All changes to documents must follow the process as explained in the *Rail Safety Management Plan* (STM6042) section 2.6 “Document and Data Control”.

SYDNEY TRAMWAY MUSEUM

6.9 The Checklist for Updating Procedures & Documents

When changing a **procedure** the following needs to be performed:


- 1) Ensure that “*Track Changes*” option is set on in Microsoft Word (Under the *Tools* option);
- 2) *Accept all* of the previous changes;
- 3) Save the document as the **next** version in the “*Documents in Draft*” folder;
- 4) For Procedures, change the *Date* of the first page;
- 5) Change the *Version Number* on page 2;
- 6) Change the *Document Status* – from *Approved* to *Draft*
- 7) Add the details into the *Version History*;
- 8) Change the *Version No.* and *Date* at the footer;
- 9) Make the necessary modifications to the body of the document; and
- 10) Save the document.
- 11) If it is a **new document** add the details in the latest form *STM6001 Document Register* in both the *Numeric* sheet and the *Alphabetic* sheet. Also update the *Cross Reference* Sheet.
- 12) Open the latest *STM6001 – Document Control Record – Issue Register* to record the latest *Version No.* and *Date of the procedure* in sheet called *Documents*.
- 13) For statistical recording in the RSM’s monthly report, update, in the *Statistical List* sheet, the quarter that the update occurred.
- 14) When the document has been approved:
 - a. Change the *Document Status* – from *Draft* to *Approved*;
 - b. Move the old document to the “*Archived Documents*” folder;
 - c. Move the new document to the “*Current Documents*” folder;
 - d. Print out the document and file the printed document in the SMS folders.

6.10 Procedure for Regularly Creating Various copies of Updated SMS Files

As the SMS is now on the STM WEB site (<http://www.sydneytramwaymuseum.com.au/sms/>) new versions of documents. are emailed to the Deputy Rail Safety Manager so that the SMS web site can be updated.

How do I check a document for tracked changes and comments and Remove them?

Office Word 2007 provides a feature called *Document Inspector* that allows you to check any document for tracked changes, comments, hidden text, and other personal information. To check a document:

1. Open the document you want to inspect for tracked changes and comments.
2. Click the **Microsoft Office Button**  (top left hand corner of the screen), point to **Prepare**, and then click **Inspect Document**.
3. In the **Document Inspector** dialog box, click **Inspect**.
4. Review the inspection results. If Document Inspector finds comments and tracked changes, you are prompted to click **Remove All** next to **Comments, Revisions, Versions, and Annotations**.
5. Click **Close**.

SYDNEY TRAMWAY MUSEUM

7. Notification To ONRSR of Changes to Tramway Operations

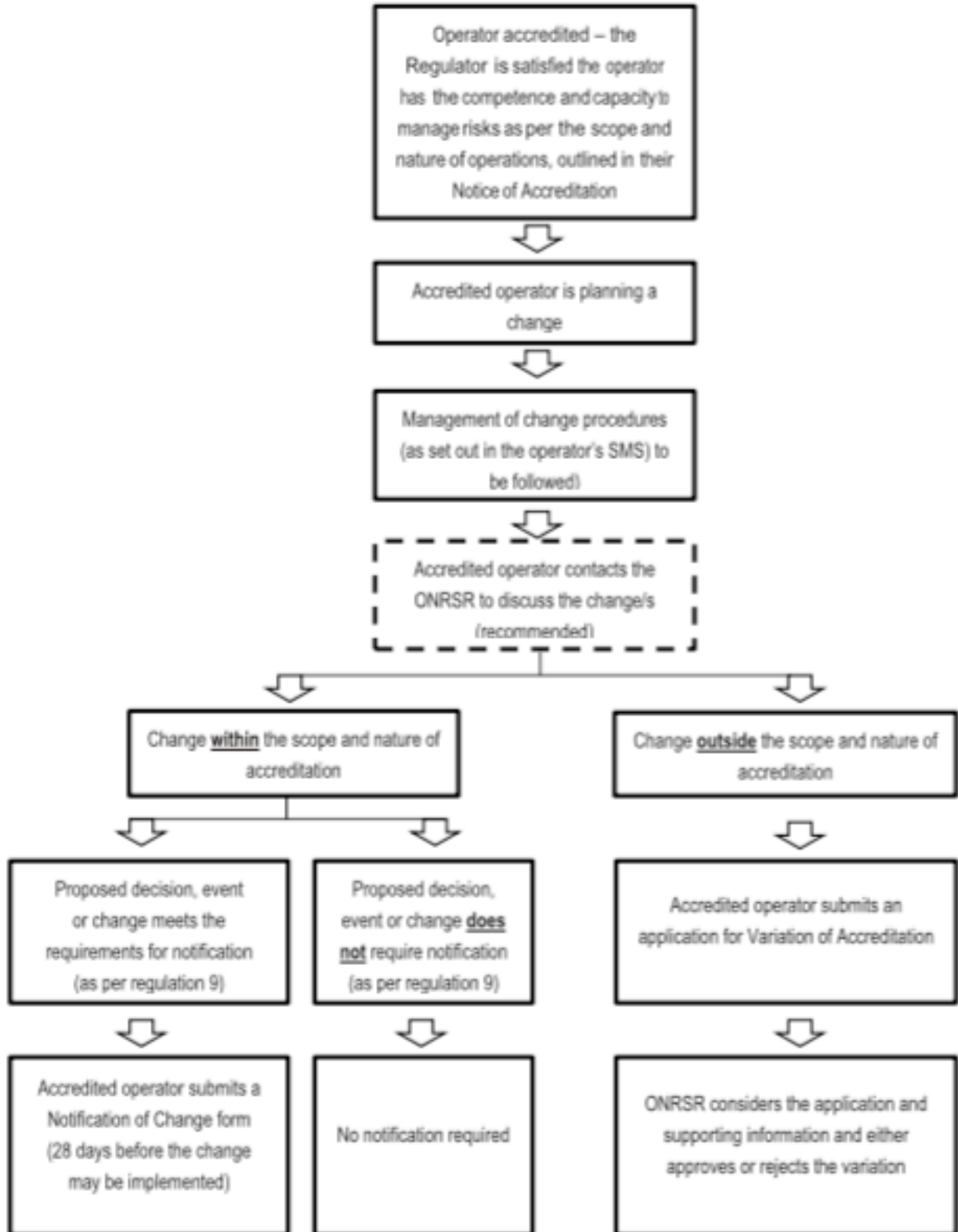
The following proposed decisions, events or changes must be notified to ONRSR within the timeframe specified:

Item	Decision, event or change	When notification must be given
1	A decision to design or construct, or to commission the design or construction of rolling stock or new railway tracks.	As soon as reasonably practicable after the decision is made.
2	The introduction into service of rolling stock of a type not previously operated by the operator, or the re-introduction into service of rolling stock not currently operated by the operator.	At least 28 days before the date the operator intends to introduce or re-introduce the rolling stock into service.
3	A change to a safety critical element of any existing rolling stock.	At least 28 days before the date the operator intends to bring the change into operation.
4	A change to one or more of the classes of railway infrastructure used in the operator's accredited operations.	At least 28 days before the date the operator intends to introduce the new class of rail infrastructure into service.
5	A change to a safety standard for the design of railway infrastructure and rolling stock.	At least 28 days before the date the operator intends to adopt the change.
6	The decision to adopt a new safety standard for the design of rail infrastructure or rolling stock.	At least 28 days before the date the operator intends to adopt the new standard.
7	A change to the frequency of or procedures for the inspection or maintenance of railway infrastructure and rolling stock.	At least 28 days before the date the operator intends to bring the change into effect.
8	A change to the network rules relating to the conduct of the operator's railway operations.	At least 28 days before the operator intends to bring the change into effect.
9	A decision to introduce a new network rule relating to the conduct of the operator's railway operations.	In accordance with the provisions of Part 4 Division 4 of the Regulations.
10	A decision to change any work scheduling practices and procedures se-check out in the operator's fatigue risk management program.	At least 28 days before the date the operator intends to bring the change into effect.
11	The replacement, or a change in the contact details of any person appointed under regulation 8(b).	As soon as is reasonably practicable after it is known the replacement or change will occur.
12	A change in the operator's name or residential address, or the operator's business or trading name, or in the case of a body corporate, a change in the name or registered business address of the body corporate.	As soon as is reasonably practicable after the change is made.

See the Notification of Change Guidelines for further details.

SYDNEY TRAMWAY MUSEUM

Appendix 1: Overview for determining the regulatory requirements



ooo000ooo