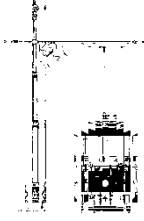


# Sydney Tramway Museum

Owned and Operated by the Volunteers of the  
South Pacific Electric Railway Cooperative Society Ltd  
ABN 70 329 300 628

Corner Pitt Street & Rawson Ave (Old Princes Hwy) Loftus NSW  
PO Box 103 - Sutherland NSW 1499 - Australia  
Phone: (02) 9542 3646 □ Fax: (02) 9545 3390



## TRAFFIC / SAFETY NOTICE

---

STM Traffic / Safety Notice No. 1701

---

**TITLE: RESETTING POINTS BESIDE TAFE**

**DATE OF OPERATION: 21/03/2017**

**DETAILS OF NOTICE:**

**The crossover points beside the TAFE MUST always be set to the straight. This means that when returning from Sutherland, the conductor must set the points to the eastern track and once the tram has passed reset the points to the straight again.**

**Departments Effected**

**Traffic: Yes/No      Workshop: Yes/No      Infrastructure: No**

**Person Issuing the Notice:**

**Name:** *Ian Saxon*

**Title:** *Rail Safety Manager*

**Signature:** *Ian Saxon*

**Date of Issue:** 21/03/2017

**Authorised by:** *Training & Assessment Committee.*

**DATE TO BE REMOVED FROM NOTICE BOARDS: Until Further Notice**

**Copies to:**

*Be placed on Notice Boards in Traffic Office and Workshop*

*STM Secretary*

*RSM (for registering and filing)*

*Traffic Manager (for distribution to Traffic Staff)*